

LHB Site Data Inbox Configuration

Prerequisites

Install the required tools:

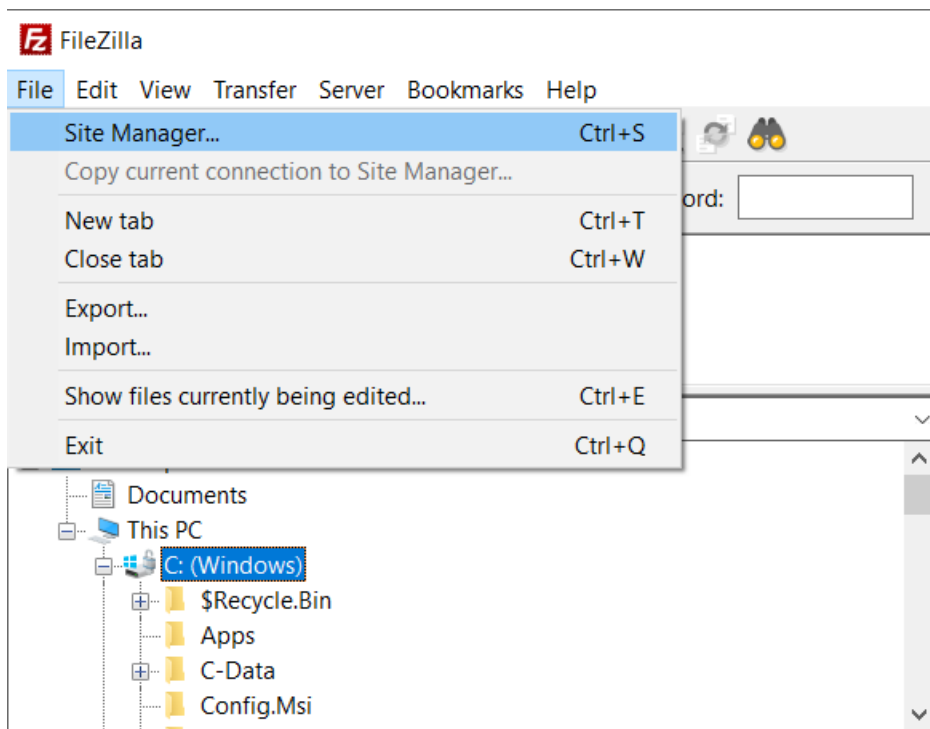
1. FileZilla (for Windows and Mac OS) - <https://filezilla-project.org/download.php?type=client>

Setting up FileZilla (for both Windows and Mac OS)

1. Download FileZilla

If not installed you may download it here - <https://filezilla-project.org/download.php?type=client>

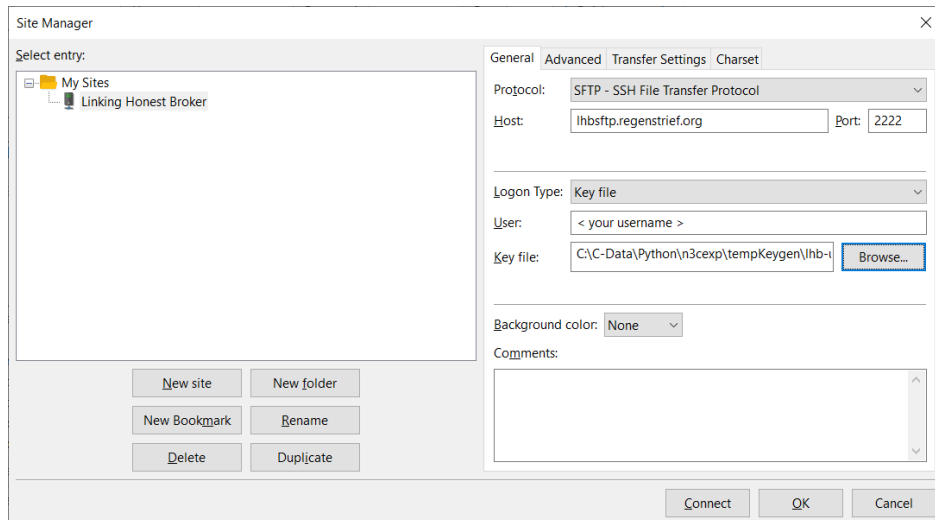
2. Open FileZilla and Star the Site Manager



3. Create a new site with the following configuration

- Site Name: Good to use a meaningful name like "Linkage Honest Broker"
- Protocol: SFTP - SSH File Transfer Protocol

- Host: lhbsftp.regenstrief.org
- Port: 2222 (**Important**, this deviates from the standard ssh port 22)
- Login Type: Key File
 - Used to identify the Private key you have generated
- User: Username provided by Regenstrief
- Key file: Browse to the location and filename of the Private key you have generated



4. You can now connect to your LHB data inbox

Should you have any connection problems you may contact the LHB at the N3C service desk <https://n3c-help.atlassian.net/servicedesk/customer/portal/2>

You can submit a ticket by choosing N3C Record Linkage, then select "Linkage Honest Broker" for the PPRL Question Category